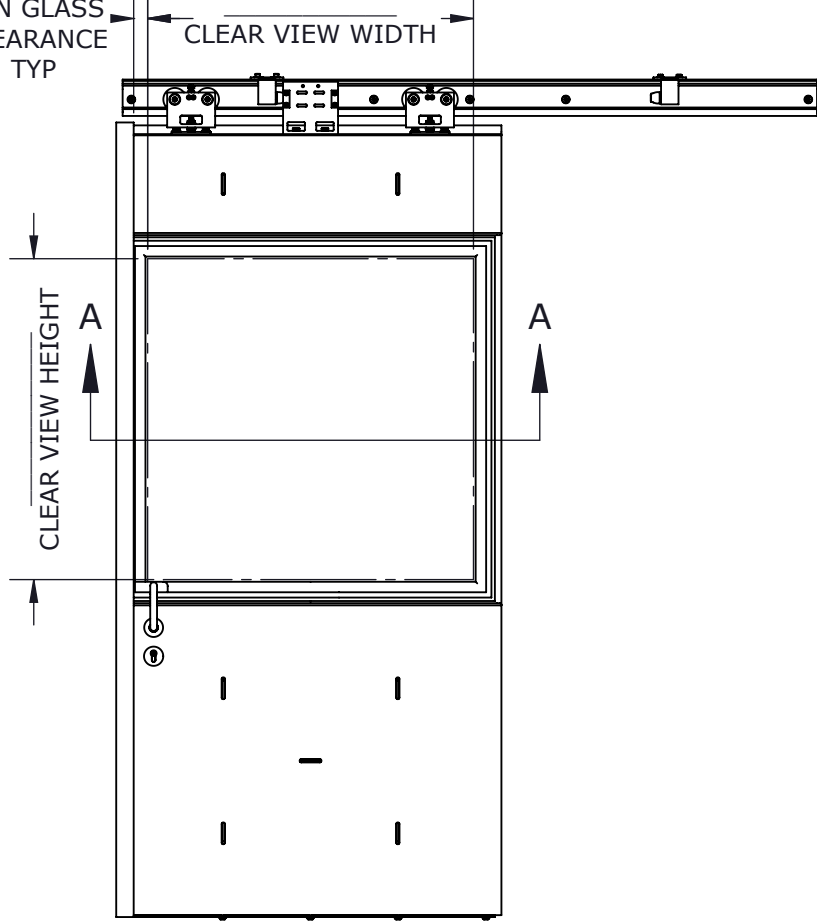
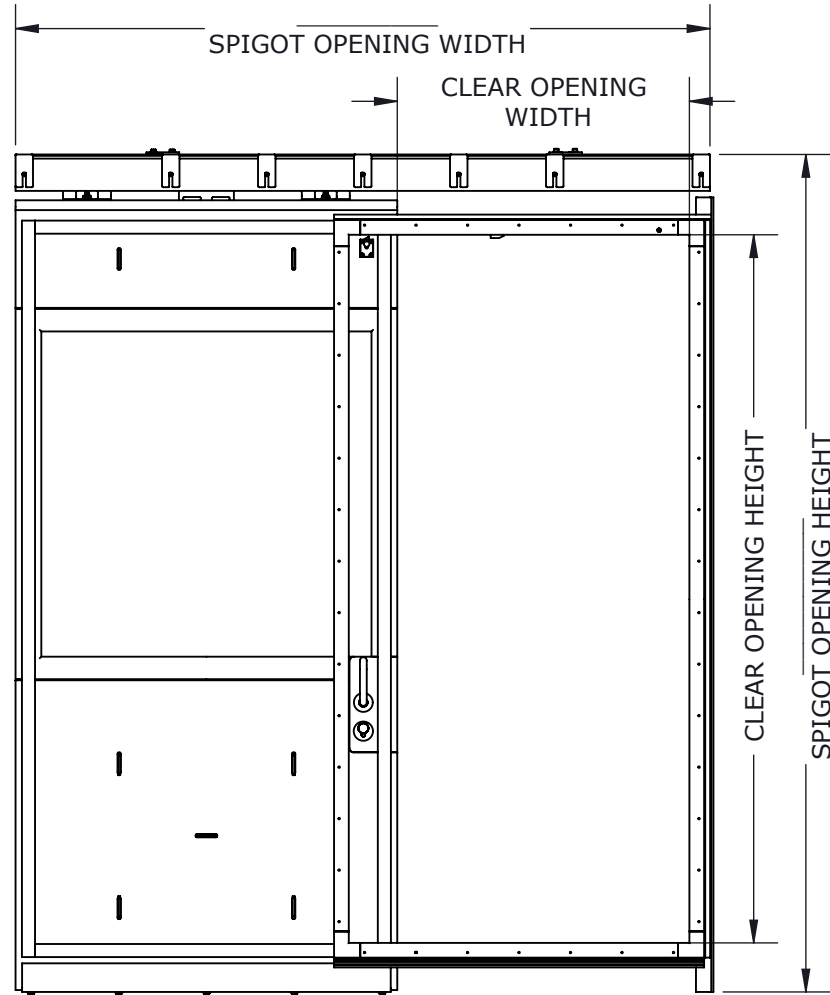


40.7mm [1.60in]  
MIN GLASS  
CLEARANCE  
TYP



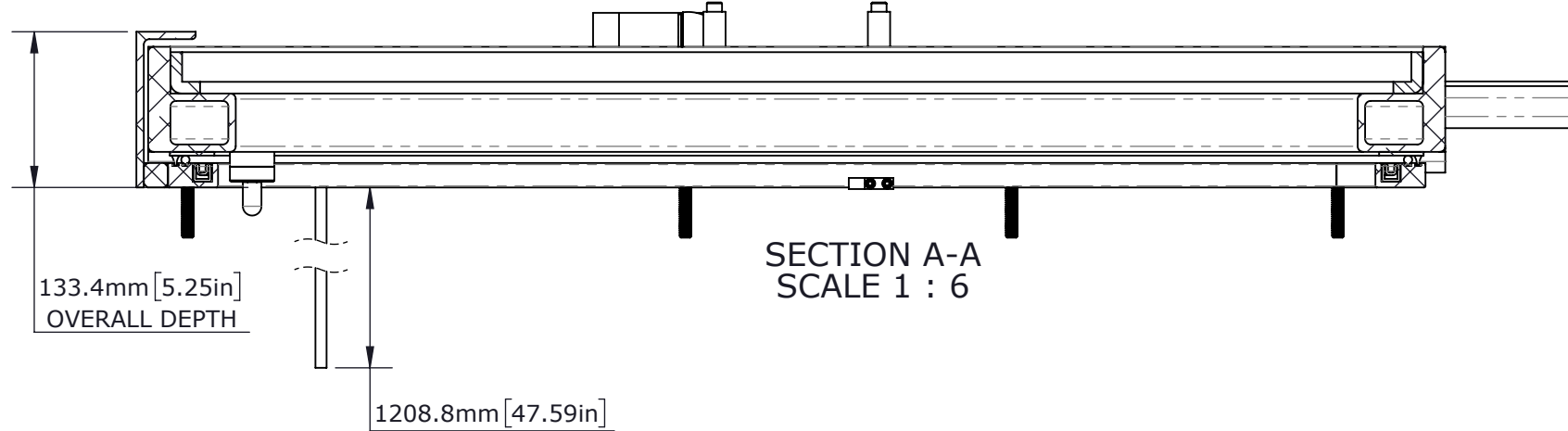
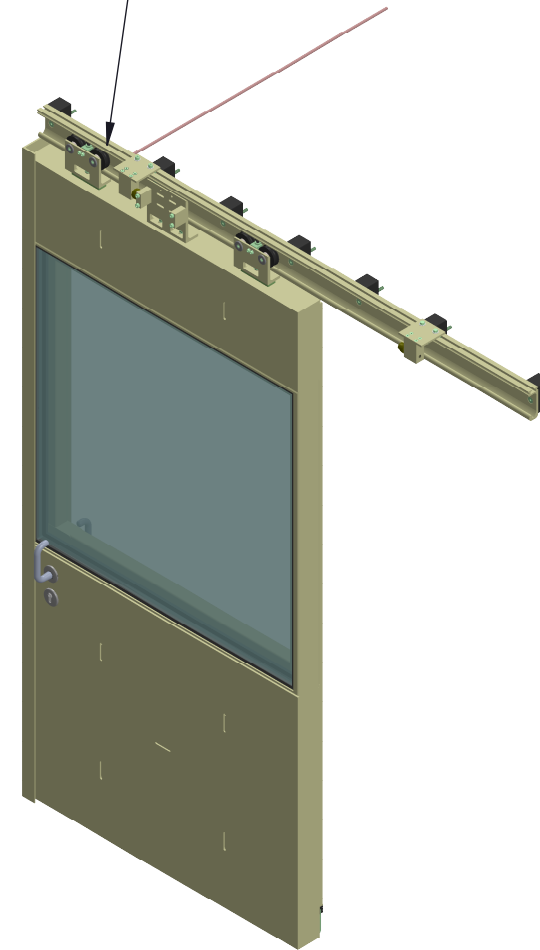
**EXTERIOR VIEW (CLOSED)**



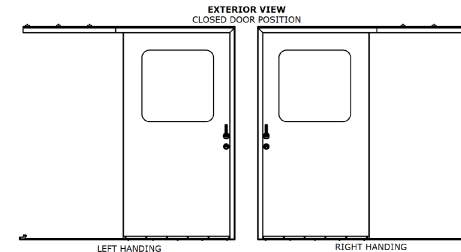
**INTERIOR VIEW (OPEN)**

OVERALL = SPIGOT OPENING  
 CLEAR OPENING = SPIGOT OPENING - 1170.9mm[46.10in]WIDTH/437.4mm[17.22in]HEIGHT  
 PLATE CUT = SPIGOT OPENING + 6.35mm[0.25in]

1730 MODEL POWERED BY  
ADVANTEC WHISPER DRIVE SYSTEM



**SECTION A-A  
SCALE 1 : 6**



**OPTIONS**

<b>HANDING</b>	RIGHT HANDED	
	LEFT HANDED	
<b>LOCK</b>	LOCKING	
	NOT LOCKING	
<b>LOCK MECHANISM</b>	LOCKSET/HANDLE	
	LOCKSET/DEADBOLT	
	PASSAGE SET/HANDLE	
<b>WINDOW STYLE</b>	FULL HEIGHT	
	HALF HEIGHT	
	CIRCULAR	
	NO PORTLIGHT	
<b>OPENING SYSTEM</b>	AUTOMATIC	
	MANUAL	
<b>WHISPER DRIVE SYSTEM</b>		
<b>SAFETY</b>	EYE BEAMS & PINCH SENSORS	
<b>PUSH BUTTONS</b>	PIEZO LED (1-SET)	
<b>TOUCH SCREEN</b>	DISPLAY (4) PRESET MODES	
<b>GEAR BOX</b>	GEAR RATIO VARIES PER SYSTEM	
<b>CONTROL BOX SIZE [mm]</b>	420W X 356L X 165H	
<b>JUNCTION BOX SIZE [mm]</b>	420W X 356L X 165H	
<b>MAX DISTANCE</b>	JUNCTION BOX TO MOTOR 2.5m JUNCTION BOX TO CONTROL BOX 5m	
<b>BACK-UP</b>	BATTERY (10) FULL CYCLES	
<b>DRIVE TYPE</b>	BELT DRIVE	
<b>SECURITY</b>	PIN LOCK	

**CUSTOMER**

ADVANTEC

**PROJECT**

1730 PCM SALES DRAWING

**DESCRIPTION**

STANDARD 1730 PCM SERIES  
MODEL AND DRAWING

CONTACT (604) 607-0091 DATE 10/5/2020



DWG TITLE 1730 SERIES DOOR CAGE CODE

DESCRIPTION Premium Duty, Sliding, Top-Hung Single Leaf Aluminum - Manual or Automatic QTY

COPYRIGHT 2020 ADVANTEC GLOBAL INNOVATIONS. ALL RIGHTS RESERVED. CONFIDENTIAL PROPERTY OF ADVANTEC GLOBAL INNOVATIONS. UNAUTHORIZED USE, REPRODUCTION OR DISTRIBUTION IS STRICTLY PROHIBITED. COPIES REMAIN THE PROPERTY OF ADVANTEC GLOBAL INNOVATIONS AND MUST BE RETURNED UPON REQUEST.

SCALE 1:22	DRAWN SP	DATE 10/5/2020	CHECKED	DATE	SIZE B
S.O. NO	DWG NO 1730-1 PCM Sales	SHEET 1 of 1	REV 00		