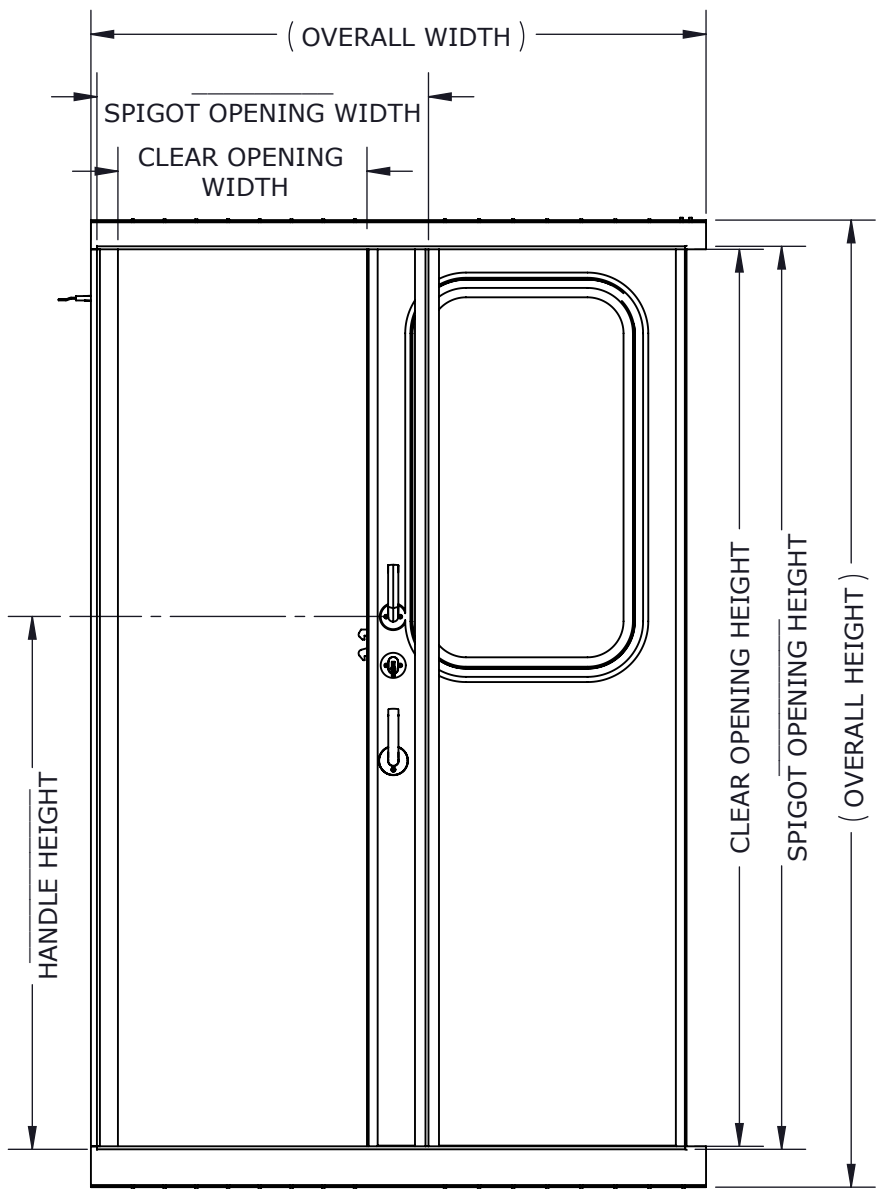
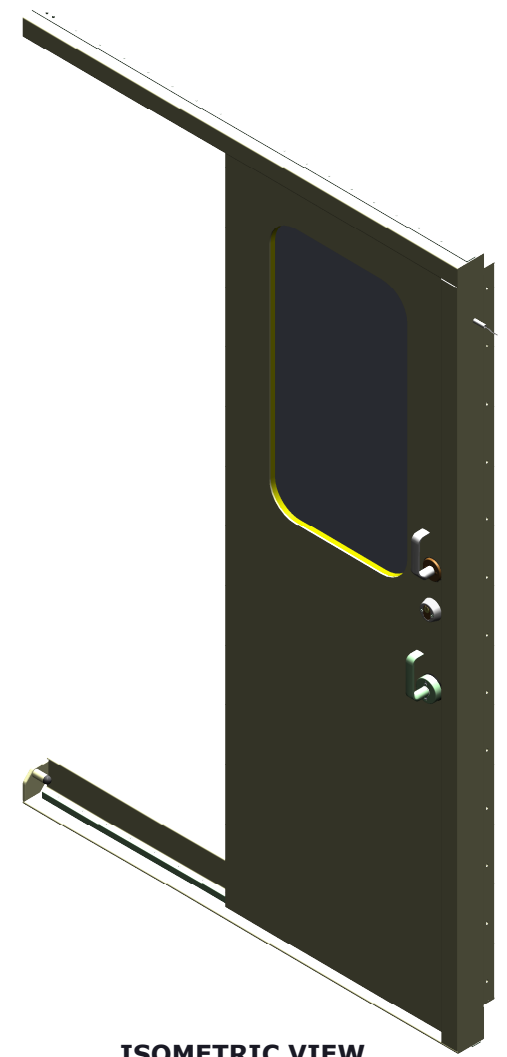


EXTERIOR VIEW (CLOSED)

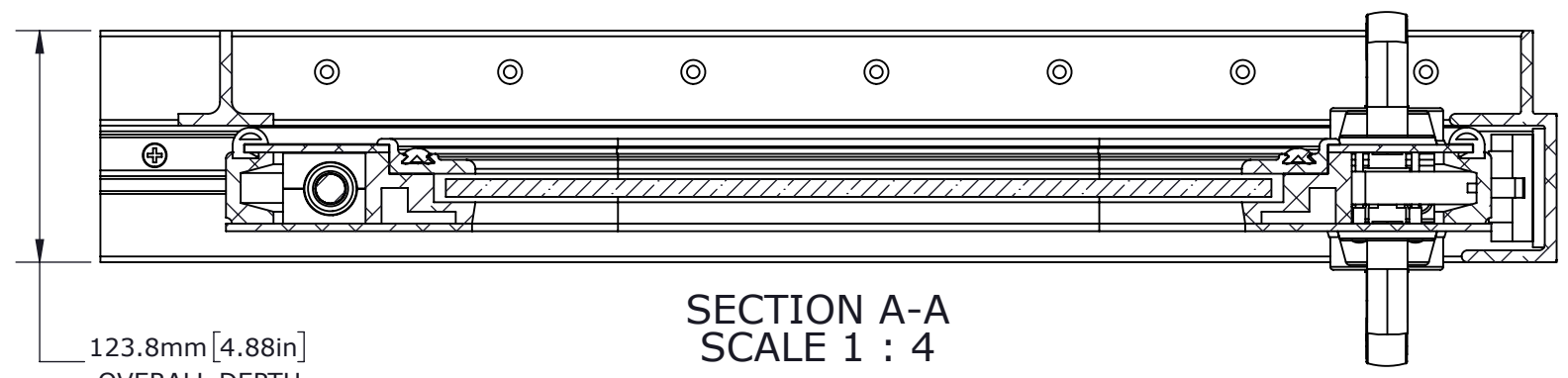


INTERIOR VIEW (OPEN)

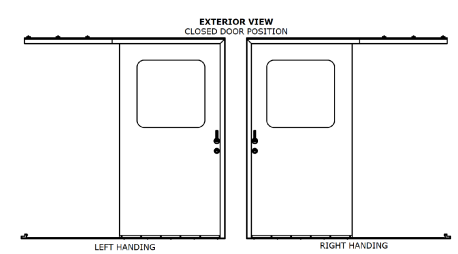
OVERALL = SPIGOT OPENING + 600.2mm[23.63 in]WIDTH/135.6mm[5.34 in]HEIGHT
 CLEAR OPENING = SPIGOT OPENING - 174.5mm[6.87 in]WIDTH/12.7mm[0.5 in]HEIGHT
 PLATE CUT = SPIGOT OPENING + 6.35mm[0.25 in]



ISOMETRIC VIEW
SCALE 1 : 16



SECTION A-A
SCALE 1 : 4



OPTIONS

HANDING	RIGHT HANDED	
	LEFT HANDED	
LOCK	LOCKING	
	NOT LOCKING	
LOCK MECHANISM	LOCKSET/HANDLE	
	LOCKSET/DEADBOLT	
	PASSAGE SET/HANDLE	
WINDOW STYLE	FULL HEIGHT	
	HALF HEIGHT	
	CIRCULAR	
	NO PORTLIGHT	

CUSTOMER

ADVANTEC

PROJECT

1720 PCM SALES DRAWING

DESCRIPTION

STANDARD 1720 PCM SERIES
MODEL AND DRAWING

CONTACT	DATE
(604) 607-0091	10/5/2020



PACIFIC COAST MARINE

DWG TITLE	CAGE CODE
1720 SERIES DOOR	

DESCRIPTION	QTY
Premium Duty, Sliding, Dual-Axis, Single Leaf	

COPYRIGHT 2020 ADVANTEC GLOBAL INNOVATIONS. ALL RIGHTS RESERVED. CONFIDENTIAL PROPERTY OF ADVANTEC GLOBAL INNOVATIONS. UNAUTHORIZED USE, REPRODUCTION OR DISTRIBUTION IS STRICTLY PROHIBITED. COPIES REMAIN THE PROPERTY OF ADVANTEC GLOBAL INNOVATIONS AND MUST BE RETURNED UPON REQUEST.

SCALE	DRAWN	DATE	CHECKED	DATE	SIZE
1:16	SP	10/5/2020			B
S.O. NO	DWG NO	SHEET	REV		
	1720-1 PCM Sales	1 of 1	00		