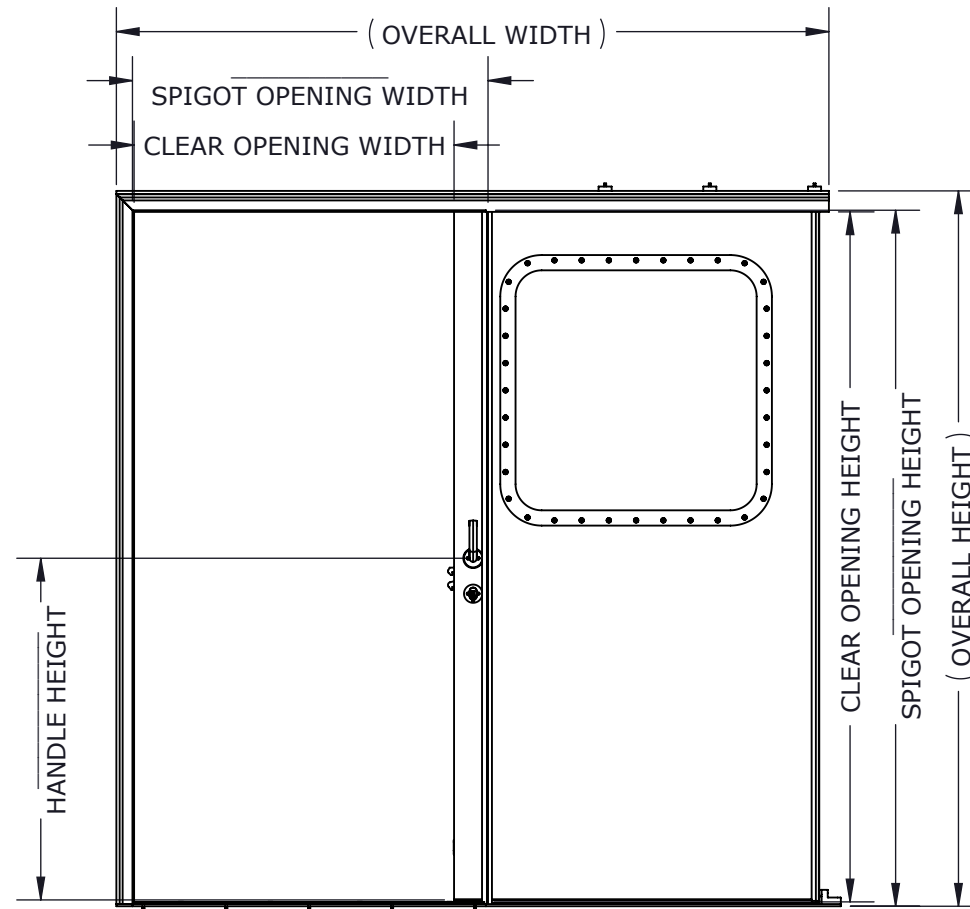
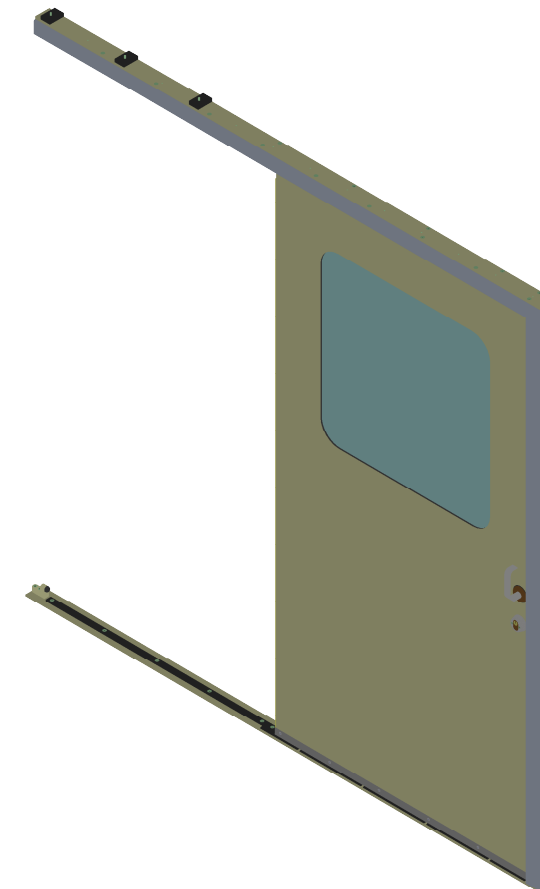


EXTERIOR VIEW (CLOSED)

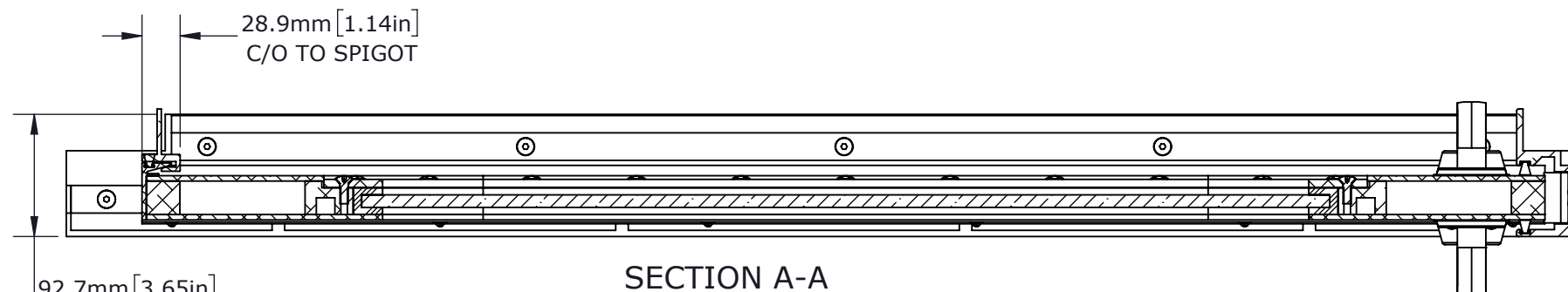


INTERIOR VIEW (OPEN)

OVERALL = SPIGOT OPENING + 1039mm[40.9in]WIDTH/56.3mm[2.22in]HEIGHT
 CLEAR OPENING = SPIGOT OPENING - 103.6mm[4.06in]WIDTH/17.5mm[0.69in]HEIGHT
 PLATE CUT = SPIGOT OPENING + 6.35mm[0.25in]

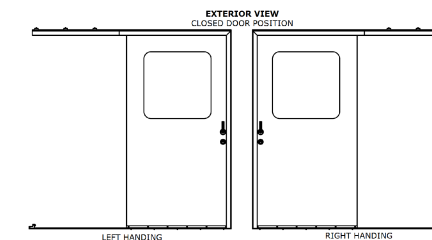
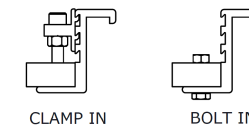


ISOMETRIC VIEW
SCALE 1 : 20



SECTION A-A
SCALE 1 : 5

FRAME STYLES



OPTIONS	
HANDING	RIGHT HANDED
	LEFT HANDED
LOCK	LOCKING
	NOT LOCKING
LOCK MECHANISM	LOCKSET/HANDLE
	LOCKSET/DEADBOLT
	PASSAGE SET/HANDLE
WINDOW STYLE	FULL HEIGHT
	HALF HEIGHT
	CIRCULAR
	NO PORTLIGHT
OPENING SYSTEM	AUTOMATIC
	MANUAL

CUSTOMER	ADVANTEC
PROJECT	1710 PCM SALES DRAWING
DESCRIPTION	STANDARD 1710 PCM SERIES MODEL AND DRAWING

CONTACT	(604) 607-0091	DATE	10/5/2020
---------	----------------	------	-----------



DWG TITLE	1710 SERIES DOOR	CAGE CODE	
DESCRIPTION	Standard Duty, Sliding, Single-Axis, Single Leaf & Bi-Parting	QTY	

COPYRIGHT 2020 ADVANTEC GLOBAL INNOVATIONS. ALL RIGHTS RESERVED. CONFIDENTIAL PROPERTY OF ADVANTEC GLOBAL INNOVATIONS. UNAUTHORIZED USE, REPRODUCTION OR DISTRIBUTION IS STRICTLY PROHIBITED. COPIES REMAIN THE PROPERTY OF ADVANTEC GLOBAL INNOVATIONS AND MUST BE RETURNED UPON REQUEST.

SCALE	DRAWN	DATE	CHECKED	DATE	SIZE
1:22	SP	10/5/2020			B
S.O. NO	DWG NO	SHEET	REV		
	1710-1 PCM Sales	1 of 1	00		