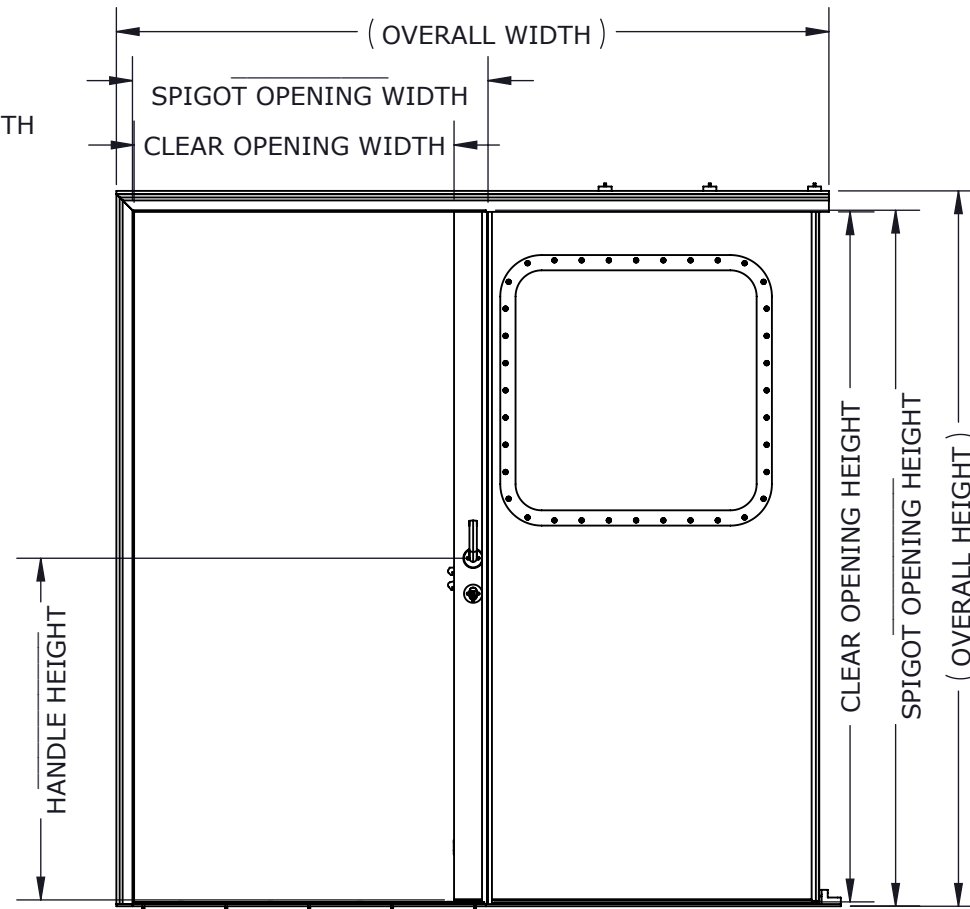
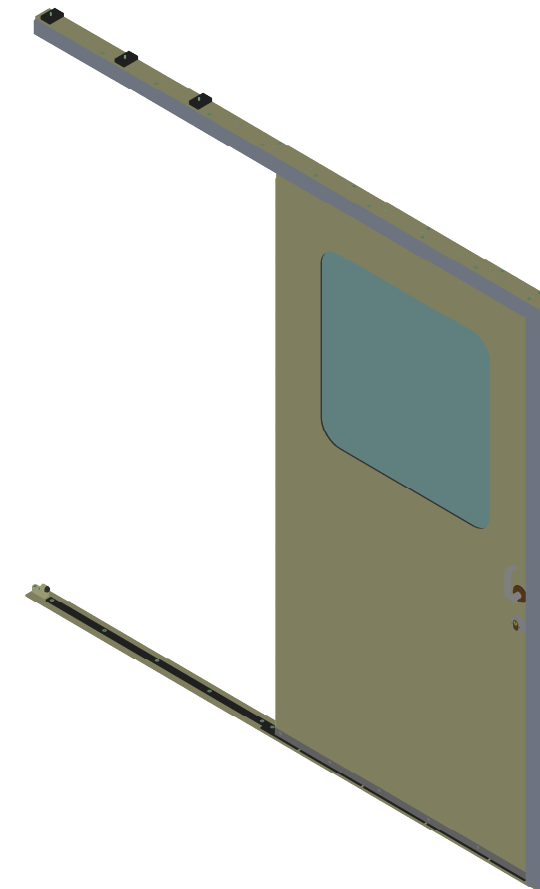


EXTERIOR VIEW (CLOSED)

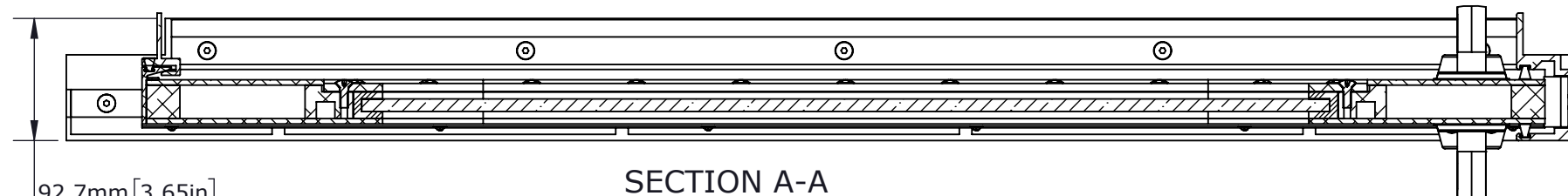


INTERIOR VIEW (OPEN)

OVERALL = SPIGOT OPENING + 1039mm[40.9in]WIDTH/56.3mm[2.22in]HEIGHT
 CLEAR OPENING = SPIGOT OPENING + 103.6mm[4.06in]WIDTH/17.5mm[0.69in]HEIGHT
 PLATE CUT = SPIGOT OPENING + 6.35mm[0.25in]



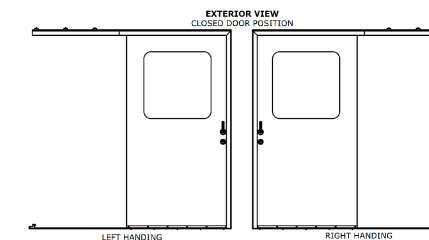
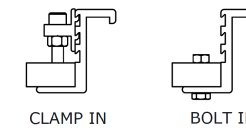
ISOMETRIC VIEW
SCALE 1 : 20



92.7mm [3.65in]
OVERALL DEPTH

SECTION A-A
SCALE 1 : 5

FRAME STYLES



OPTIONS

HANDING	RIGHT HANDED	
	LEFT HANDED	
LOCK	LOCKING	
	NOT LOCKING	
LOCK MECHANISM	LOCKSET/HANDLE	
	LOCKSET/DEADBOLT	
	PASSAGE SET/HANDLE	
WINDOW STYLE	FULL HEIGHT	
	HALF HEIGHT	
	CIRCULAR	
	NO PORTLIGHT	
OPENING SYSTEM	AUTOMATIC	
	MANUAL	

CUSTOMER

ADVANTEC

PROJECT

1710 FREEMAN SALES DRAWING

DESCRIPTION

STANDARD 1710 FREEMAN SERIES
MODEL AND DRAWING

CONTACT (604) 607-0091 DATE 10/7/2020



DWG TITLE 1710 SERIES DOOR CAGE CODE

DESCRIPTION Standard Duty, Sliding, Single-Axis, Single Leaf & Bi-Parting QTY

COPYRIGHT 2020 ADVANTEC GLOBAL INNOVATIONS. ALL RIGHTS RESERVED. CONFIDENTIAL PROPERTY OF ADVANTEC GLOBAL INNOVATIONS. UNAUTHORIZED USE, REPRODUCTION OR DISTRIBUTION IS STRICTLY PROHIBITED. COPIES REMAIN THE PROPERTY OF ADVANTEC GLOBAL INNOVATIONS AND MUST BE RETURNED UPON REQUEST.

SCALE 1:22	DRAWN SP	DATE 10/7/2020	CHECKED	DATE	SIZE B
S.O. NO	DWG NO 1710-1 FME Sales	SHEET 1 of 1	REV	00	