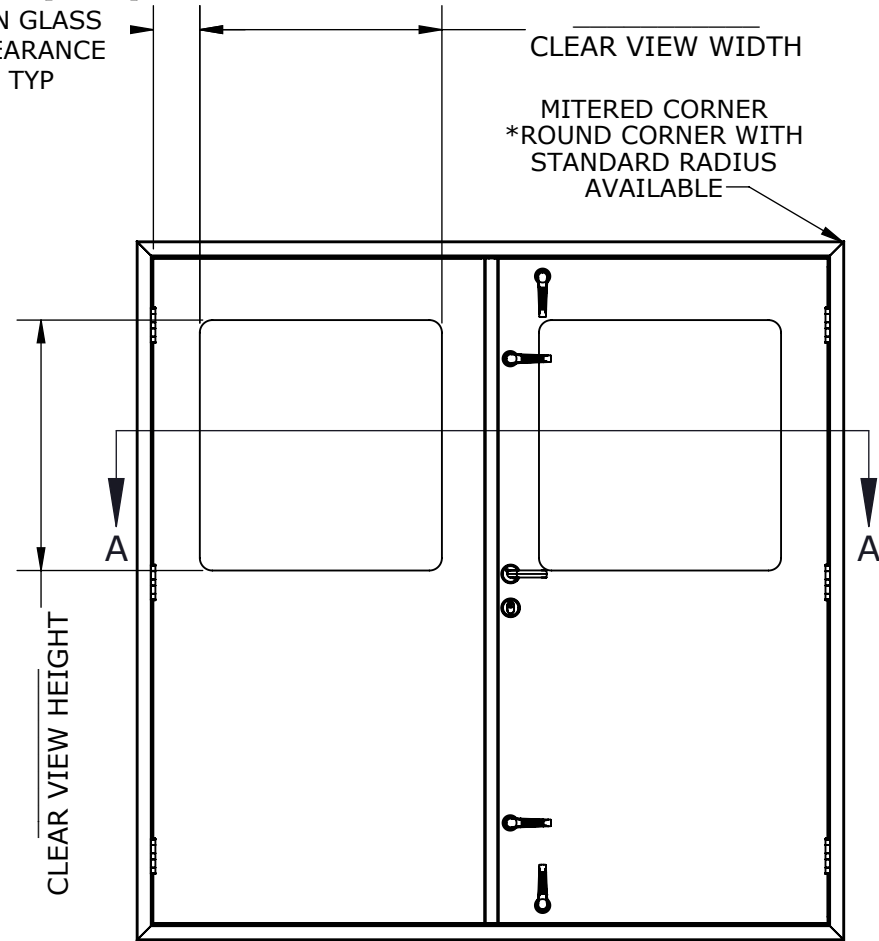
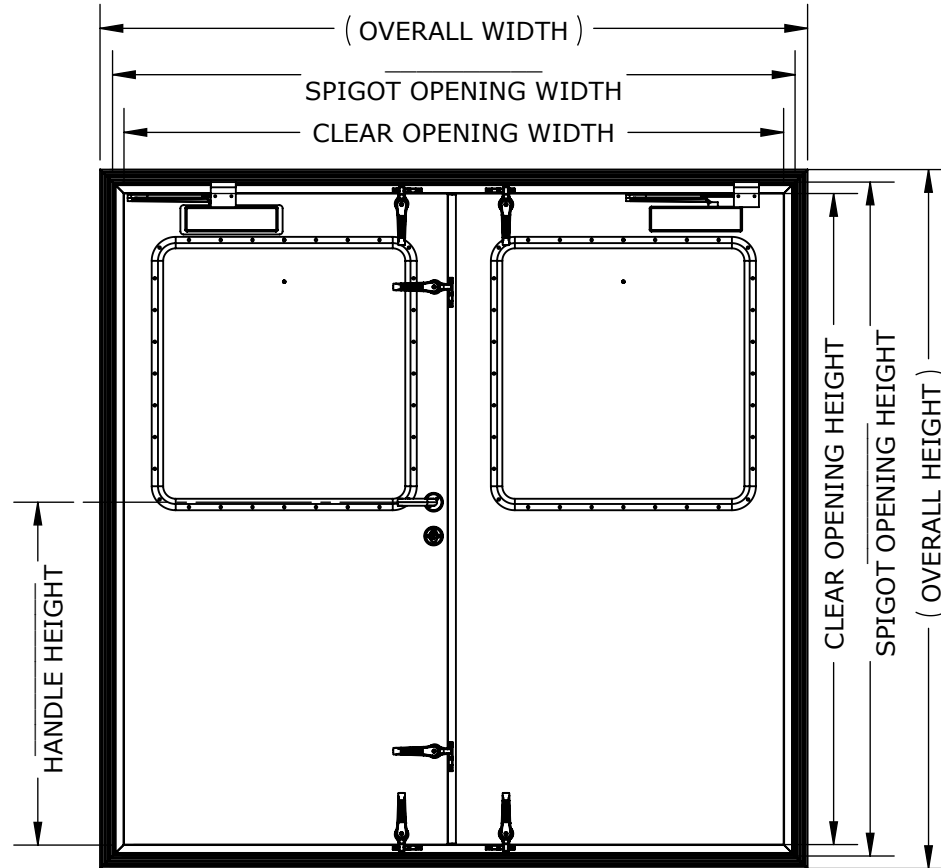


141.3mm [5.56in]
MIN GLASS
CLEARANCE
TYP

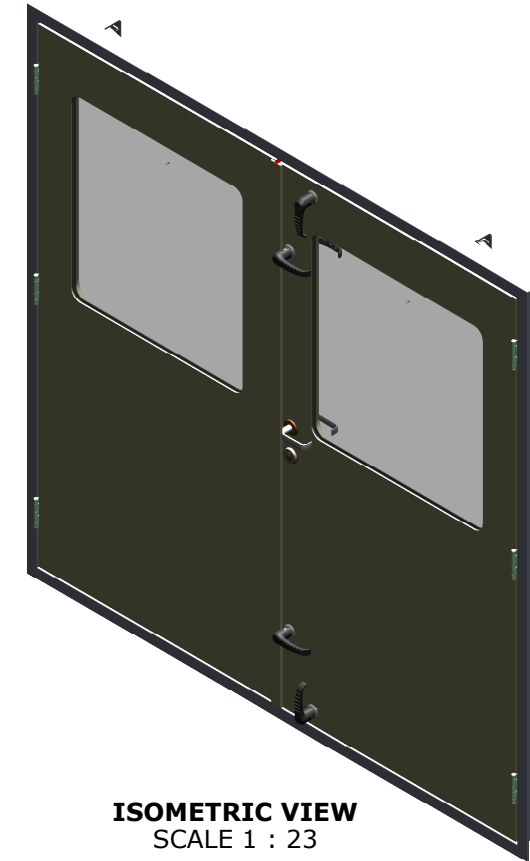


EXTERIOR VIEW

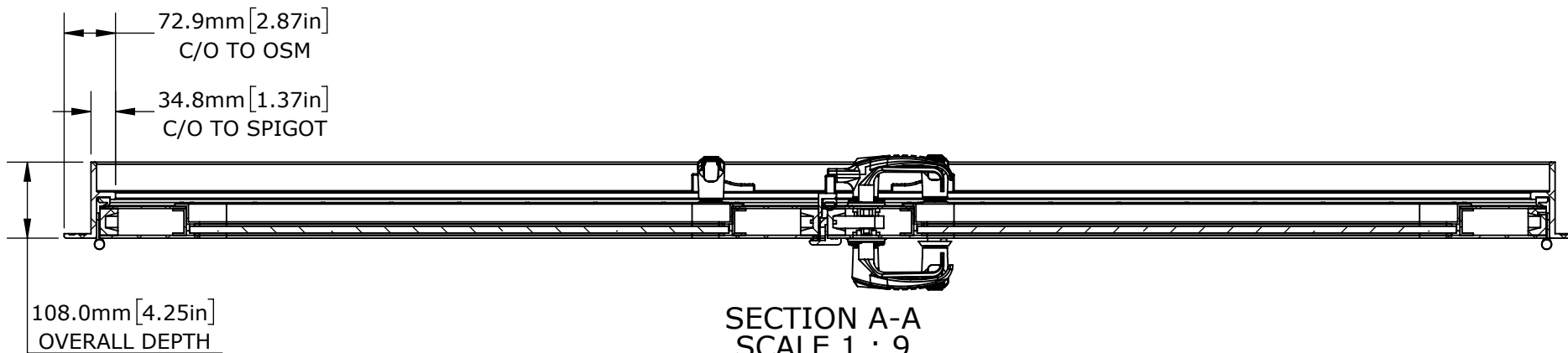


INTERIOR VIEW

OVERALL = SPIGOT OPENING + 76.2mm[3.00in]
CLEAR OPENING = SPIGOT OPENING - 70.1mm[2.62 in]
PLATE CUT = SPIGOT OPENING + 6.35mm[0.25 in]

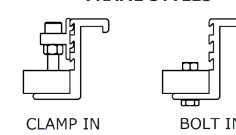


ISOMETRIC VIEW
SCALE 1 : 23

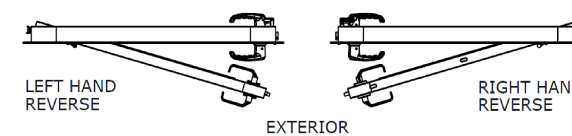


SECTION A-A
SCALE 1 : 9

FRAME STYLES



INTERIOR



OPTIONS

HANDING	RIGHT HANDED	
	LEFT HANDED	
LOCK	LOCKING	
	NOT LOCKING	
LOCK MECHANISM	LOCKSET/HANDLE	
	LOCKSET/DEADBOLT	
	PASSAGE SET/HANDLE	
DOG STYLE	ALUMINIUM	
	CONCEALED	
	NYLON	
	STAINLESS STEEL	
WINDOW STYLE	FULL HEIGHT	
	HALF HEIGHT	
	CIRCULAR	
	NO PORTLIGHT	
FRAME STYLE	BOLT IN	
	CLAMP IN	
*CORNER TYPE	MITRED	
	ROUND	

CUSTOMER

ADVANTEC

PROJECT

1611 FREEMAN SALES DRAWING

DESCRIPTION

STANDARD 1611 FREEMAN SERIES
MODEL AND DRAWING

CONTACT (604) 607-0091 DATE 10/7/2020



DWG TITLE 1611 SERIES DOOR CAGE CODE

DESCRIPTION Standard Duty, French Leaf, Bonded Construction, Individual Dog QTY

COPYRIGHT 2020 ADVANTEC GLOBAL INNOVATIONS. ALL RIGHTS RESERVED. CONFIDENTIAL PROPERTY OF ADVANTEC GLOBAL INNOVATIONS. UNAUTHORIZED USE, REPRODUCTION OR DISTRIBUTION IS STRICTLY PROHIBITED. COPIES REMAIN THE PROPERTY OF ADVANTEC GLOBAL INNOVATIONS AND MUST BE RETURNED UPON REQUEST.

SCALE 1:23	DRAWN SP	DATE 10/7/2020	CHECKED	DATE	SIZE B
S.O. NO	DWG NO 1611-1 FME SALES	SHEET 1 of 1	REV 00		